

Nanovib[®] telescopic pole shaft



USE

- ° For guiding heavy loads during lifting (loading/unloading) to the hoist.

PREVENTION OF RISK

° Safe handling

- The telescopic shaft enables the user to stand to one side during the handling of loads and to avoid the risk of accidents or injuries.

° Improved posture

- The Nanovib telescopic pole allows guiding of loads with a reach of up to 5m without holding the shaft above the rotatory cuff (main cause of MSDs of the shoulder).

PRODUCT BENEFITS

Ergonomics

- ° Aluminium telescopic shaft: lightweight.
- ° Oval tube section for better control.

Strength

- ° Tube made of hardened aluminium of 1.5mm thickness


Product highlights

- ° 2 in 1 steel head :
 - (1) 1 hook : to pull the load
 - (2) 2latches : to push the load
- ° Latches : to push the load.

- ° Automatic setting handle : locking/unlocking system without trigger
- ° quick setting of shaft length by notches every 50cm.
- ° Storage length : 2m: may be stored in a container.

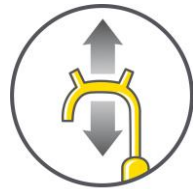
ADDITIONAL INFORMATION

- ° Do not strike or twist tubes as this will stop them sliding inside the tubes.

- °  Caution: Do not touch electrical cables with the tool



Safe handling



Push / Pull

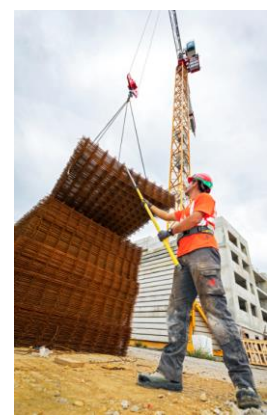
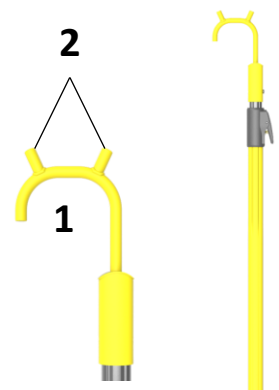


2 m > 3,5 m



5m

Total reach



Description	Gencod	width	length	Weight
Nanovib [®] telescopic pole shaft	3157331470099	15 cm	2>3,5m	1,8kg